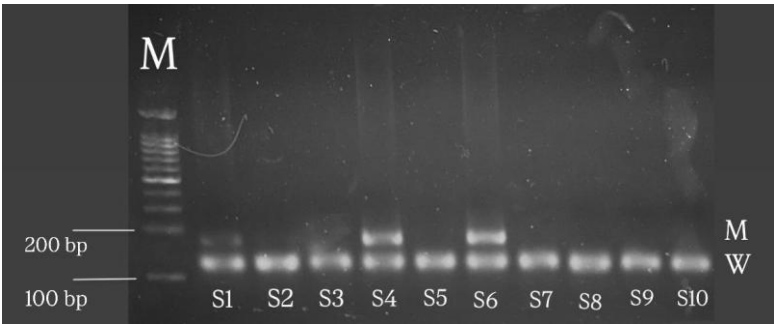


1. Hasil Rekapitulasi Data Penelitian

Hasil Pemeriksaan metode Multiplex Mutagenically Separated PCR Pada Keluarga yang Berisiko Kanker Payudara

No	Kode Sampel	Usia	Keluarga	Hasil Alel
1.	S1	19 Tahun	Keluarga III	6174delT
2.	S2	34 Tahun	Keluarga III	Wildtype
3.	S3	45 Tahun	Keluarga I	Wildtype
4.	S4	38 Tahun	Keluarga I	6174delT
5.	S5	19 Tahun	Keluarga I	Wildtype
6.	S6	36 Tahun	Keluarga I	6174delT
7.	S7	32 Tahun	Keluarga II	Wildtype
8.	S8	34 Tahun	Keluarga II	Wildtype
9.	S9	19 Tahun	Keluarga II	Wildtype
10.	S10	20 Tahun	Keluarga II	Wildtype



2. Hasil Uji Data Statistik SPSS Versi 23

a. Hasil Uji Statistik Hubungan Usia Responden dengan Mutasi 6174delT pada Gen BRCA2

- Tabel Kontingensi

Alel * Katergori Usia Crosstabulation

			Katergori Usia		Total
			Muda	Tua	
Alel	6174delT	Count	1	2	3
		Expected Count	2.1	.9	3.0
		% within Alel	33.3%	66.7%	100.0%
		% within Katergori Usia	14.3%	66.7%	30.0%
		% of Total	10.0%	20.0%	30.0%
	Wildtype	Count	6	1	7
		Expected Count	4.9	2.1	7.0
		% within Alel	85.7%	14.3%	100.0%
		% within Katergori Usia	85.7%	33.3%	70.0%
		% of Total	60.0%	10.0%	70.0%
Total		Count	7	3	10
		Expected Count	7.0	3.0	10.0
		% within Alel	70.0%	30.0%	100.0%
		% within Katergori Usia	100.0%	100.0%	100.0%
		% of Total	70.0%	30.0%	100.0%

- Uji Chi-Square

Chi-Square Tests

	Value	df	Asymptotic Significance (2-sided)	Exact Sig. (2-sided)	Exact Sig. (1-sided)
Pearson Chi-Square	2.744 ^a	1	.098	.183	.183
Continuity Correction ^b	.816	1	.366		
Likelihood Ratio	2.657	1	.103		
Fisher's Exact Test					
Linear-by-Linear Association	2.469	1	.116		
N of Valid Cases	10				

a. 4 cells (100.0%) have expected count less than 5. The minimum expected count is .90.

b. Computed only for a 2x2 table

b. Hasil Uji Statistik Hubungan Diagnosa Klinis dengan Mutasi 6174delT pada Gen BRCA2

- Tabel Kontingensi

Alel * Kategori Diagnosis Crosstabulation

			Kategori Diagnosis		Total
			Kanker Payudara	Suspect Kanker	
Alel 6174delT	Count		0	3	3
	Expected Count		.3	2.7	3.0
	% within Alel		0.0%	100.0%	100.0%
	% within Kategori Diagnosis		0.0%	33.3%	30.0%
	% of Total		0.0%	30.0%	30.0%
Wildtype	Count		1	6	7
	Expected Count		.7	6.3	7.0
	% within Alel		14.3%	85.7%	100.0%
	% within Kategori Diagnosis		100.0%	66.7%	70.0%
	% of Total		10.0%	60.0%	70.0%
Total	Count		1	9	10
	Expected Count		1.0	9.0	10.0
	% within Alel		10.0%	90.0%	100.0%
	% within Kategori Diagnosis		100.0%	100.0%	100.0%
	% of Total		10.0%	90.0%	100.0%

- Uji Chi-Square

Chi-Square Tests

	Value	df	Asymptotic Significance (2-sided)	Exact Sig. (2-sided)	Exact Sig. (1-sided)
Pearson Chi-Square	.476 ^a	1	.490	1.000	.700
Continuity Correction ^b	.000	1	1.000		
Likelihood Ratio	.760	1	.383		
Fisher's Exact Test					
Linear-by-Linear Association	.429	1	.513		
N of Valid Cases	10				

a. 3 cells (75.0%) have expected count less than 5. The minimum expected count is .30.

b. Computed only for a 2x2 table